

2. How to install Pictures To Exe onto your computer.

At the end of this lesson you will be able install Pictures To Exe onto your computer by locating the Pictures To Exe file and double clicking the Pictures To Exe executable icon to install the program.

Recall:

As mentioned in lesson 1 – it is necessary to run a virus check on the downloaded Pictures To Exe program before installation.

Step One:

Locate the downloaded zipped folder called **picturestoexe_setup.zip**. Right click with the mouse and select **Extract All**.

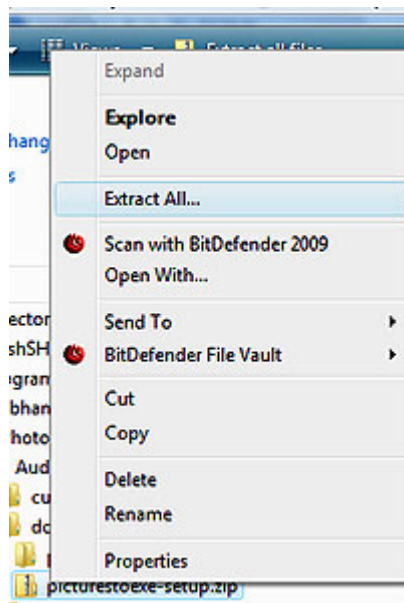


Figure 2.1 Extract All option

Step Two:

The Extraction screen welcome wizard will open.

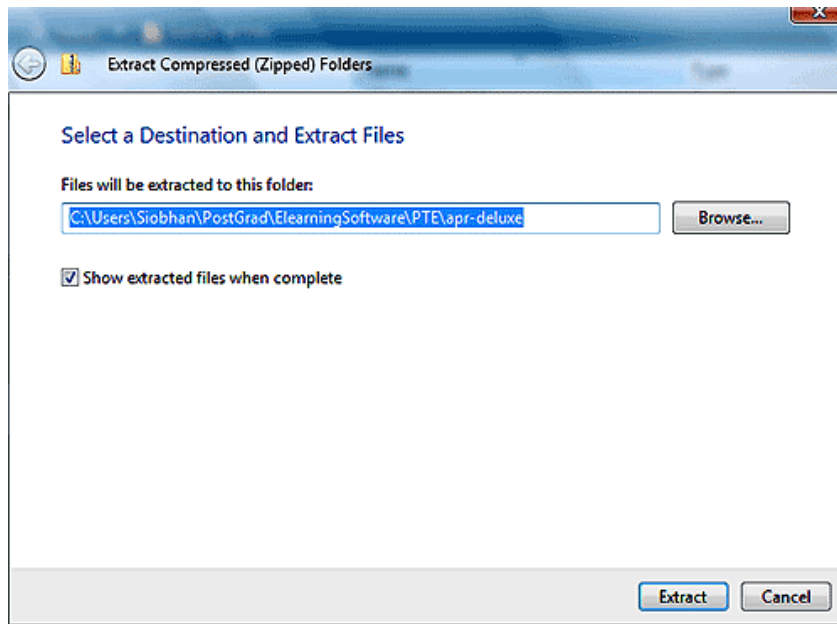


Figure 2.2 Select a Destination and extract Files dialog box.

The Extraction wizard automatically selects a destination to place the files. Click the browse and place the extracted files into the folder already created called **“Downloaded_software”**.

Click the Extract button.

The files will be extracted into the folder called `picturestoexe_setup` as highlighted in red in figure 2.3.

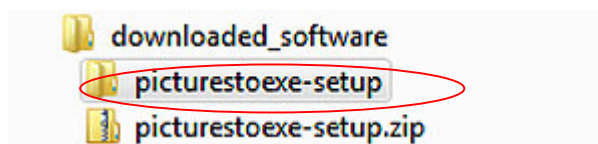
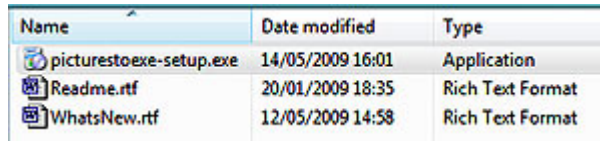


Figure 2.3 Downloaded_software folder containing Pictures To Exe application.

Step Three:

Double click the **picturestoexe_setup.exe** icon file to begin the installation of Picture ToExe.



Name	Date modified	Type
picturestoexe-setup.exe	14/05/2009 16:01	Application
Readme.rtf	20/01/2009 18:35	Rich Text Format
WhatsNew.rtf	12/05/2009 14:58	Rich Text Format

Figure 2.3 picturestoexe_setup.exe file.

Step 4

The Setup – Pictures To Exe Deluxe 5.6.4 dialog box opens. Follow the onscreen instructions:

- Accept the licence agreement. (If you wish take a moment to read it). Click the **“Next”** button.
- The **‘Select Destination Location’** automatically places PicturesToExe into the program files folder (C:\Program files\WnSoftvPicturesToExe\5.6), accept this location and press the **“Next”** button. (If you want to change the location where PicturesToExe will be installed then click the **Browse** button).
- The **Start Menu** folder page opens - click the **“Next”** button.
- The **Additional Tasks** page opens allowing you to create a desktop icon, associate Pictures To Exe with the .pte file extension and associate Video Builder with the .ptv file extension. Uncheck the tick boxes if you do not want the above tasks to occur. Click the **“Next”** button.
- The installation of Pictures To Exe commences.
- The welcome screen in Pictures To Exe opens.

You have successfully installed Pictures to Exe on your computer.

In the next lesson we will open Pictures To Exe and locate the folder storing all the images that will be used in our first project.