

3. Opening Pictures To Exe.

At the end of this lesson you will be able to demonstrate how to launch Pictures To Exe. There are different ways to open Windows Explorer. Here are two different methods:

Method One:

Open Pictures To Exe by double clicking the Pictures To Exe icon on your desktop.



Figure 3.1 Pictures To Exe icon.

Method Two:

Select **Start > All Programs > Pictures To Exe 5.5** and select the Pictures To Exe icon.

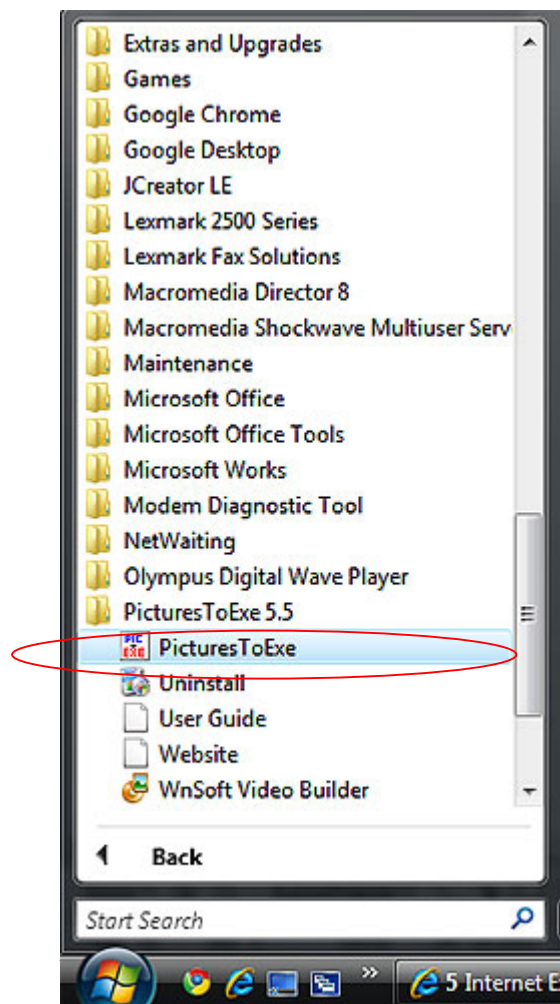


Figure 3.2 Opening Pictures To Exe

Pictures To Exe interface will open.

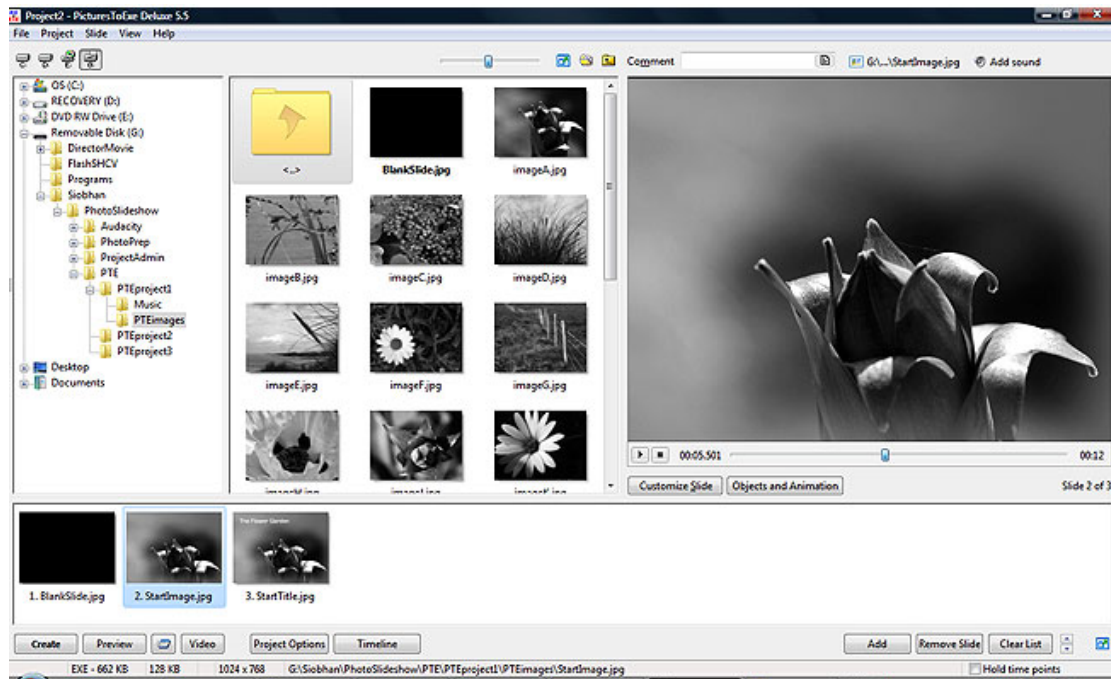


Figure 3.3 Pictures To Exe interface

Review these methods and use the method you prefer to launch Pictures To Exe.

In the next lesson we will begin using the program and identifying the main features of Pictures To Exe.