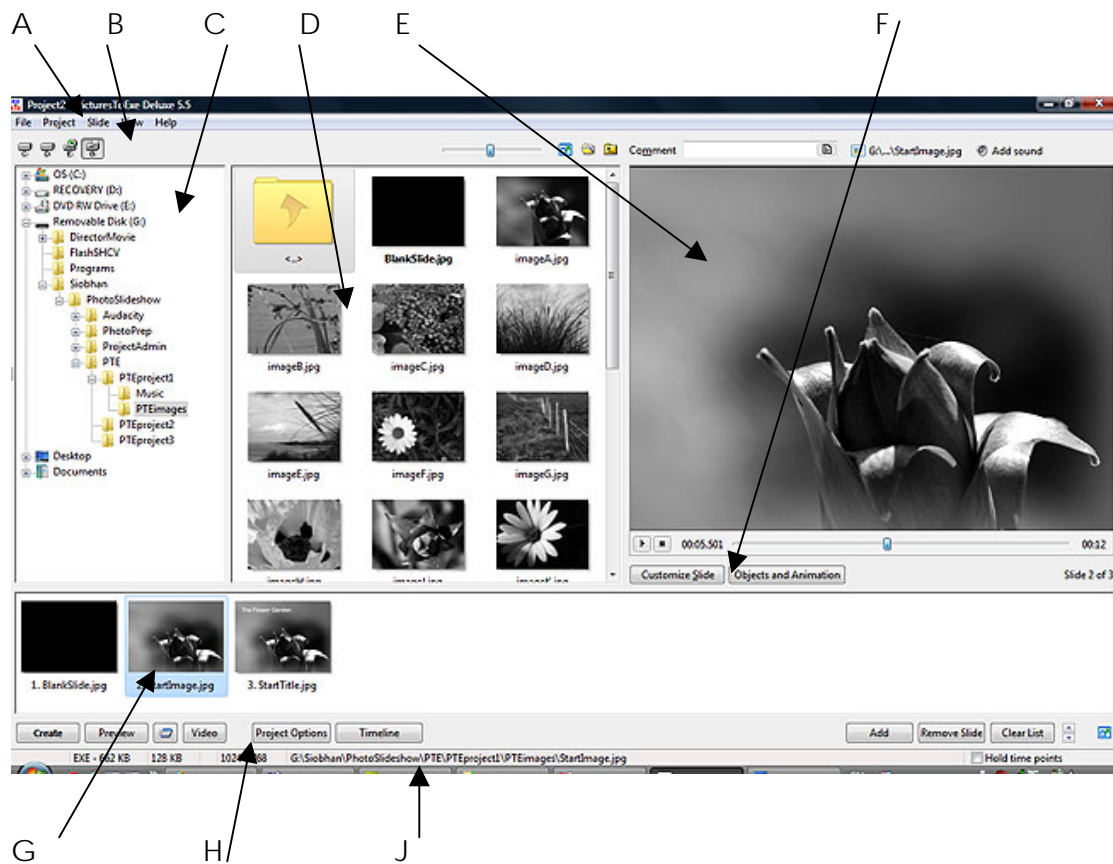


4. Identifying the main features in Picture To Exe.

At the end of this lesson you will be able to identify the main features making up the workspace of Pictures To Exe by using the mouse to scroll over the image to display the name of each feature within the workspace.



- A – Window menu
- B – The drive selector
- C – The directory tree of files
- D – The file panel
- E – The preview window for a selected file
- F – The control buttons for a selected file
- G – The slide list
- H – The control buttons
- J – The status bar

The directory tree of files:

The directory tree of files shows all the directories and files on your computer. When you select a file containing images in the directory the images will appear in the file panel.

The preview window for a selected file:

When you click on an image in the file panel it will appear in the preview window. The **Comment** box will allow you to write a comment, which will appear on the slide you have selected. The **Add sound** icon allows you to add sound to the slide you have selected.

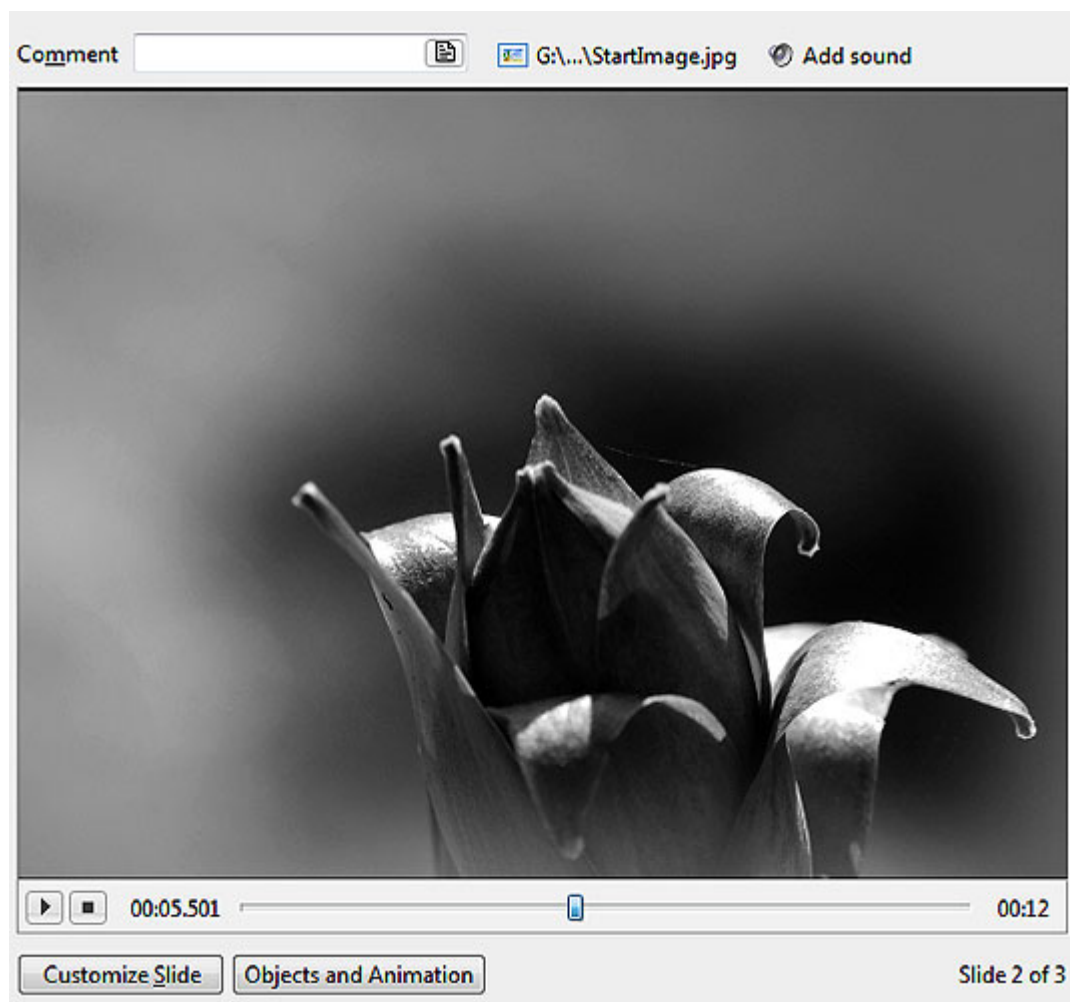
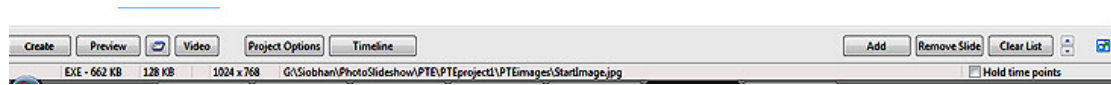


Figure 3.1 – The preview window for a selected file

The control buttons:



The **Create** button – this is used when your slideshow is complete and you are ready to create an exe file.

The **Preview** button – this button allows you to preview your slideshow from beginning to end.

The **Video** button – this button allows you to create a DVD-video disc or an AVI-file.

The **Project Options** button – this button allows you to customise the settings and parameters for globally configuring your slideshow.

The **Timeline** button – this button is necessary for synchronizing images to music.

The **Add**, **Remove Slide** and **Clear List** buttons – these buttons are related to the slide list and are used to add new images, remove unnecessary ones and clear the whole slide list.

The slide list:

The slide list is the area in the **Main Window** where slides selected for the show are placed. To place a slide in the slide list, highlight it in the file panel window and then select the Add button and it will become part of your slideshow.

For more detailed explanations please refer to Pictures To Exe Deluxe Version 5.6 The User's Guide which can be downloaded at:

<http://www.wnsoft.com/apr/help.htm>

In the next lesson we will begin adding the images to the Slide List in Pictures To Exe.