

7. Adding music to your slideshow in Pictures To Exe.

At the end of this lesson you will be able to demonstrate how to operate the Main Timeline enabling you to add music to your slideshow presentation in Pictures To Exe by selecting the music tab from the **Project Options dialog box** and pressing the **Add Music** button to locate and add the music. There are a large number of settings and adjustments contained in the Projects Options dialog box that you can apply to your slide show but the music tab is the one this lesson will concentrate on.

Step One:

To add music to the Timeline, select **Project > Project Options**.

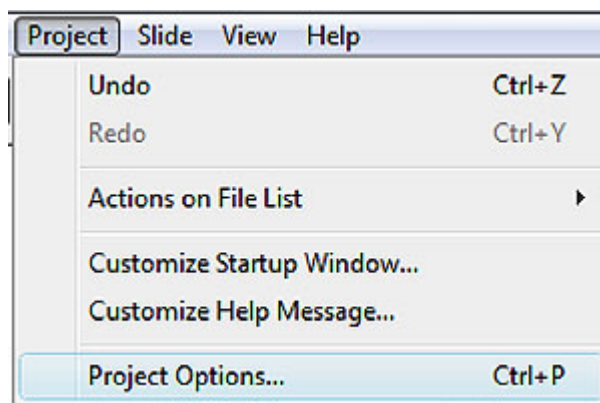


Figure 7.1 Project options.

Note: The Project Options button is also located on the Control Buttons panel.

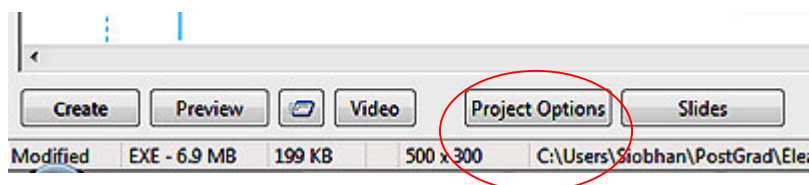


Figure 7.2 Project Options button.

Once the Project Options is selected the “**Project Options**” dialog box opens. There are various tabs on this dialog box, select the **Music Tab** and then press the **Add Music** button and locate your MP3 file and click OK.

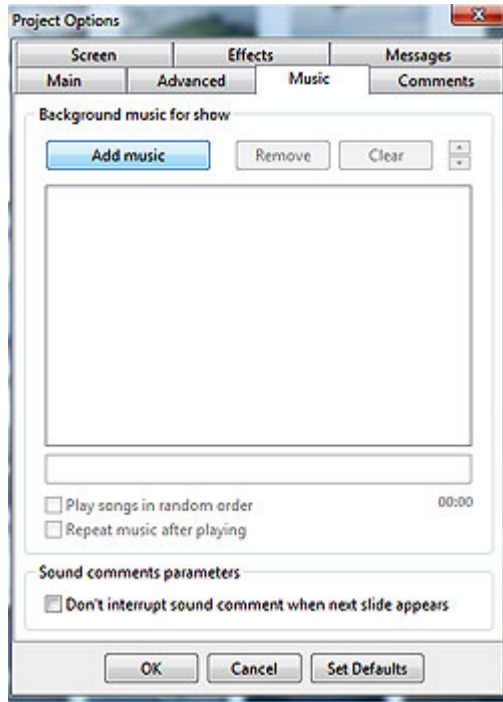


Figure 7.3 Project Options dialog box before music is added.

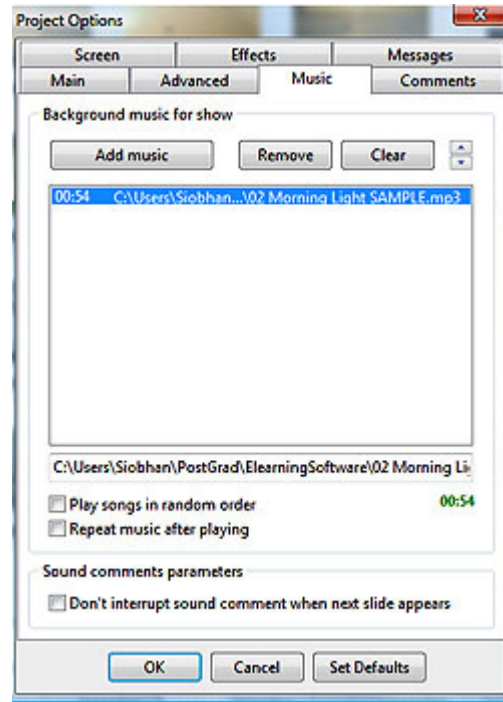


Figure 7.4 Project Options dialog box after music is added.

Step Two:

Now that the music has been added it is time to place it on the Timeline so select the “**Show waveform on timeline button**” as circled in red in figure 7.5.

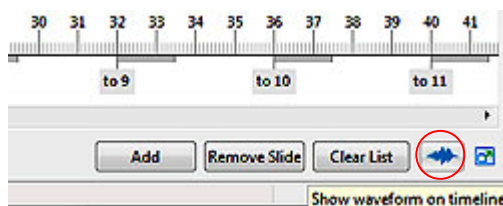


Figure 7.5 “Show waveform on timeline button”.

Once the “Show waveform on timeline button” is selected the blue waveform will appear on the timeline.

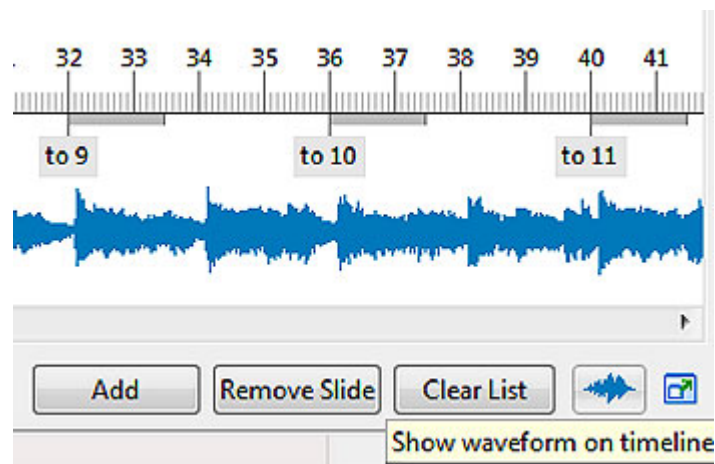


Figure 7.6 Waveform.

Step Three:

It is time to check your work so select the **Preview** button on the Controls Button Panel

In the next lesson we will learn how to alter the slide order and customize the transitions between the slides.